

Performance

Lifting height	6957.0 mm
Rated capacity	3500 kg
Capacity (at max. height)	3000 kg
Capacity (at max. reach)	1500 kg
Max. reach	4002.0 mm
Crowding force	6200 daN

Weights

Weight (unladen)	7130 kg
------------------	---------

Traction

Standard tyres	Standard 405/70x20
1st gear / low range (40 km/h option)	6 (6) km/h
1st gear / high range (40 km/h option)	11 (12) km/h
2nd gear / low range (40 km/h option)	16 (18) km/h
2nd gear / high range (40 km/h option)	30 (40) km/h

Drive System

Main drive	Hydrostatic motor with 2 speed gearbox
Transmission	Hydrostatic with electronic regulation

Engine

Make / Model	DEUTZ / TCD3.6 L4
Fuel	Diesel
Cooling	Liquid
Rated power (DIN 6271) at 2200 RPM	89.5 kW
Maximum torque at 1400 RPM	480.0 Nm
Number of cylinders	4
Displacement	3.62 L

Hydraulic System

Pump type	Load sensing pump
-----------	-------------------

Cycle Times

Lift time - no load	4.9 s
Lower time - no load	4.3 s
Telescope in time at max. reach - no load	4.8 s
Telescope in time at max. height - no load	4.8 s
Telescope out time at max. reach - no load	4.9 s
Telescope out time at max. height - no load	4.9 s

Brakes

Engine braking	Hydrostatic
Parking and emergency brake	Negative brake with hydraulic command

Fluid Capacities

Axles and reduction gears front / rear	9.1/9.1 L
Engine oil	8.00 L
Fuel tank	138.00 L
Hydraulic reservoir [HYDRAULIC]	59.00 L

Standard Features

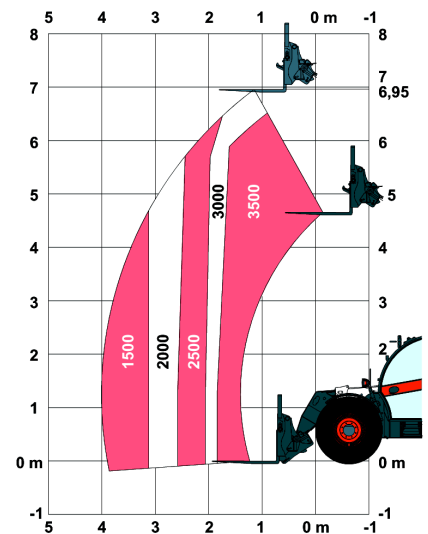
Aggravating Movements Arrester (AMA)	Mudguards
Hydrostatic transmission	Narrow hook-up for mounting of the equipment
ROPS/FOPS operator cab	Mechanical lock of the equipment
Heating, demisting and ventilation	Joystick with forward/reverse control
Front and rear washer/wipers	Transmission lock override
Suspension seat	Work lights on top of the cab
Road lights	Load Sensing Pump
Turn signals	Turbo-charged engine - Deutz 3B
Right and left side mirrors	Cold start
Two way hydraulic supply at the end of the boom	Standard 405/70x20 tyres

Environmental

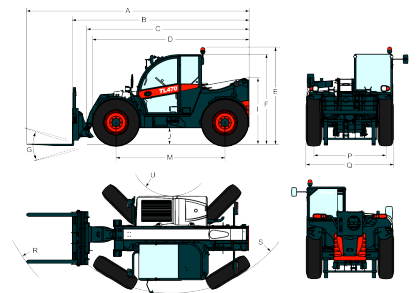
Sound pressure level (LpA)	77 dB(A)
Level of acoustic power (LWA)	106 dB(A)
Whole body vibration (ISO 2631-1)	1.20 ms ⁻²

Load Charts

With forks and standard 405/70x20 tyres



Complies with stability test EN1459 annex B

Dimensions


(-)	900.0 mm	(L)	1356.0 mm
(A)	6074.0 mm	(M)	2870.0 mm
(B)	4869.0 mm	(N)	643.0 mm
(C)	4763.0 mm	(O)	1013.0 mm
(E)	2561.0 mm	(P)	1895.0 mm
(F)	2374.0 mm	(Q)	2300.0 mm
(G)	135°	(R)	5015.0 mm
(I)	1752.0 mm	(S)	3714.0 mm
(J)	430.0 mm	(U)	1092.0 mm

Options

Air conditioning	Manitou carriage with hydraulic attachment lock
Back-up alarm	Proportional engine fan with inverter
Blue lights for henhouses	Protective grill for windshield
Boom light	Quicktach carriage with hydraulic attachment lock
Boom stop	Rear auxiliary line
Boom suspension	Sears air suspension seat
Cyclonic air prefilter	Support for vehicle registration plate without rear hydraulic hitch
Front tow hitch	Tool box
Lockable fuel cap	Transmission 40 km/h