



TELESCOPIC HANDLERS  
TL360 IIIB



# TL360 IIIB – SPECIFICATIONS

## Performance

Lifting height	6010.0 mm
Rated capacity	3000 kg
Capacity (at max. height)	3000 kg
Capacity (at max. reach)	1300 kg
Max. reach	3365.0 mm
Crowding force	5700 daN

## Weights

Weight (unladen)	6110 kg
------------------	---------

## Traction

Standard tyres	Standard 405/70x20
1st gear / low range (40 km/h option)	6 (6) km/h
1st gear / high range (40 km/h option)	11 (12) km/h
2nd gear / low range (40 km/h option)	16 (18) km/h
2nd gear / high range (40 km/h option)	30 (40) km/h

## Drive System

Main drive	Hydrostatic motor with 2 speed gearbox
Transmission	Hydrostatic with electronic regulation

## Engine

Make / Model	Deutz / TCD 3.6 L4
Fuel	Diesel
Cooling	Liquid
Rated power (ISO 14396) at 2300 rpm:	74.4 kW
Maximum torque at 1600 RPM:	410.0 Nm
Number of cylinders	4
Displacement	3.62 L

## Hydraulic System

Pump type	Gear pump with LS valve
Combined pump capacity	100.00 L/min

## Cycle Times

Lift time - no load	6.9 s
Lower time - no load	5.0 s
Telescope in time at max. reach - no load	5.3 s
Telescope in time at max. height - no load	5.3 s
Telescope out time at max. reach - no load	5.4 s
Telescope out time at max. height - no load	5.4 s

## Brakes

Engine braking	Hydrostatic
Parking and emergency brake	Negative brake with hydraulic command

## Fluid Capacities

Axles and reduction gears front / rear	9.1/9.1 L
Engine oil	8.00 L
Fuel tank	138.00 L
Hydraulic reservoir [HYDRAULIC]	59.00 L

## Standard Features

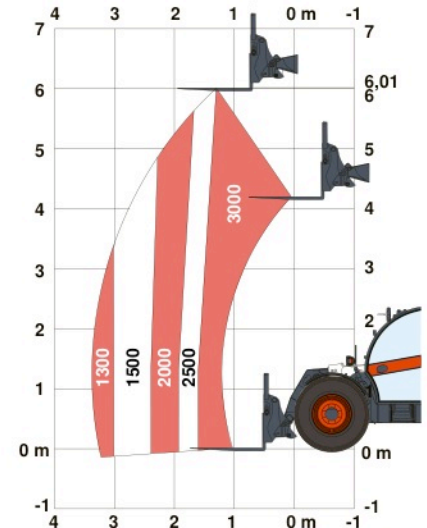
Aggravating Movements Arrester (AMA)	Two way hydraulic supply at the end of the boom
Hydrostatic transmission	Mudguards
ROPS/FOPS operator cab	Turbo-charged engine
Heating, demisting and ventilation	Narrow hook-up for mounting of the equipment
Front and rear washer/wipers	Mechanical lock of the equipment
Suspension seat	Joystick with forward/reverse control
Road lights	Transmission lock override
Turn signals	Work lights on top of the cab
Right and left side mirrors	Standard 405/70x20 tyres

## Environmental

Sound pressure level (LpA)	74 dB(A)
Level of acoustic power (LWA)	106 dB(A)
Whole body vibration (ISO 2631-1)	1.20 ms <sup>-2</sup>

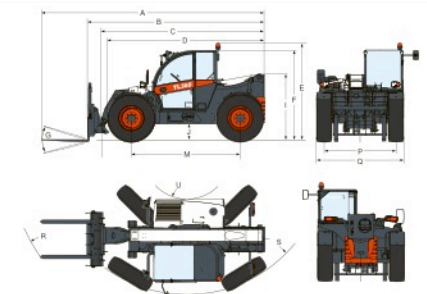
## Load Charts

With forks and standard 405/70x20 tyres



Complies with stability test EN1459 Annex B

## Dimensions



(-) 900.0 mm	(L) 1156.0 mm
(A) 5874.0 mm	(M) 2870.0 mm
(B) 4669.0 mm	(N) 643.0 mm
(C) 4563.0 mm	(O) 1013.0 mm
(E) 2561.0 mm	(P) 1895.0 mm
(F) 2374.0 mm	(Q) 2300.0 mm
(G) 135°	(R) 4852.0 mm
(I) 1752.0 mm	(S) 3714.0 mm
(J) 430.0 mm	(U) 1092.0 mm

## Options

Air conditioning	Manitou carriage with hydraulic attachment lock
Back-up alarm	Manually adjustable drawbar coupler tow hitch
Basic tow hitch	Pintle tow hitch
Blue lights for henhouses	Proportional engine fan with inverter
Boom light	Protective grill for windshield
Boom stop	Quicktach carriage with hydraulic attachment lock
Boom suspension	Rear auxiliary line with hydraulically adjustable tow hook
Cold start	Rear electric auxiliary
Cyclonic air prefilter	Sears air suspension seat
Drawbar coupler tow hitch	Support for vehicle registration plate with rear hydraulic hitch
Fire extinguisher	Tool box
Front tow hitch	Transmission 40 km/h
Hydraulically adjustable tow hook	Wheel wedge
Lockable fuel cap	

Tel.: +32 2 371 68 11 Fax: +32 2 371 69 00



**Bobcat**®

[www.bobcat.eu](http://www.bobcat.eu)