

Performance

| | |
|------------------------------------------|------------|
| Lifting height — on stabilisers | 15700.0 mm |
| Lifting height — on tyres | 15500.0 mm |
| Rated capacity | 3800 kg |
| Capacity (at max. height on stabilisers) | 2000 kg |
| Capacity (at max. height on tyres) | 1700 kg |
| Capacity (at max. reach on stabilisers) | 300 kg |
| Capacity (at max. reach on tyres) | 300 kg |
| Max. reach on stabilisers | 13350.0 mm |
| Max. reach on tyres | 13350.0 mm |

Weights

| | |
|------------------|----------|
| Weight (unladen) | 13100 kg |
|------------------|----------|

Traction

| | |
|------------------------------|--------------|
| Standard tyres | 18 — R22.5in |
| Standard tyres | 18 — R22.5in |
| Low speed (forward/reverse) | 9.0 km/h |
| High speed (forward/reverse) | 24.0 km/h |

Drive System

| | |
|--------------|----------------------------------------|
| Main drive | 2-speed hydrostatic motor |
| Transmission | Hydrostatic with electronic regulation |

Engine

| | |
|------------------------------------|-------------------------|
| Make / Model | IVECO / NEF F4GE054A-TC |
| Fuel | Diesel |
| Cooling | Liquid |
| Rated power (DIN 6271) at 2200 RPM | 74.0 kW |
| Maximum torque at 1400 RPM | 410.0 Nm |
| Number of cylinders | 4 |
| Displacement | 4485 cm ³ |

Hydraulic System

| | |
|------------------|------------------|
| Pump type | Single gear pump |
| Working pressure | 230.00 bar |

Cycle Times

| | |
|---------------------------------------------|--------|
| Lift time - no load | 23.0 s |
| Lower time - no load | 19.0 s |
| Telescope in time at max. reach - no load | 25.0 s |
| Telescope in time at max. height - no load | 21.0 s |
| Telescope out time at max. reach - no load | 31.0 s |
| Telescope out time at max. height - no load | 29.0 s |

Brakes

| | |
|-----------------------------|------------------------------------------------------------|
| Engine braking | Hydrostatic |
| Parking and emergency brake | Negative brake with electro-hydraulic command on rear axle |

Fluid Capacities

| | |
|----------------------------------------|-------------|
| Axles and reduction gears front / rear | 10.0/10.0 L |
| Engine oil | 9.00 L |
| Fuel tank | 126.00 L |
| Hydraulic reservoir [HYDRAULIC] | 270.00 L |

Standard Features

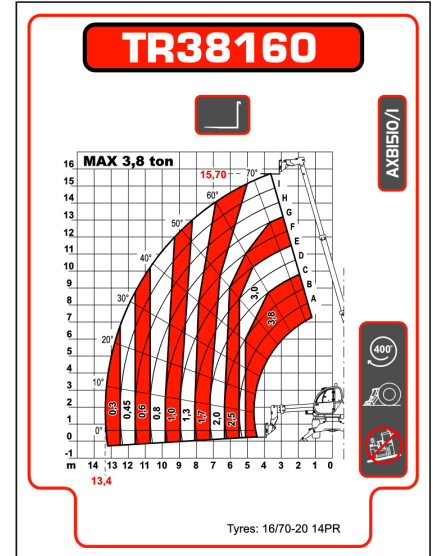
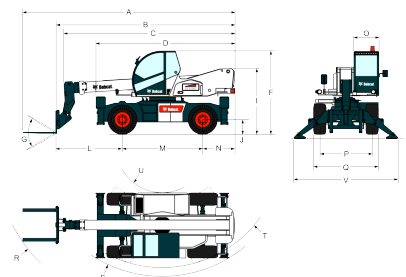
| | |
|-------------------------------------------------|--------------------------------------|
| Man platform ready | Heating, demisting and ventilation |
| Hydrostatic transmission | Carriage with manual attachment lock |
| Two way hydraulic supply at the end of the boom | ROPS/FOPS operator cab |
| Back-up alarm | Front and rear washer/wipers |
| Boom stop | Suspension seat |
| Lockable fuel cap | Road lights |

Environmental

| | |
|-----------------------------------|-----------------------|
| Sound pressure level (LpA) | 103 dB(A) |
| Whole body vibration (ISO 2631-1) | 1.50 ms ⁻² |
| Hand-arm vibration (ISO 5349-1) | 4.50 ms ⁻² |

Load Charts

On stabilisers, with forks, 90°


Dimensions


| | | | |
|-----|-----------|-----|-----------|
| (A) | 7765.0 mm | (N) | 1170.0 mm |
| (B) | 6565.0 mm | (O) | 980.0 mm |
| (C) | 6225.0 mm | (P) | 1920.0 mm |
| (D) | 4880.0 mm | (Q) | 2380.0 mm |
| (F) | 3000.0 mm | (R) | 6230.0 mm |
| (G) | 130° | (S) | 4660.0 mm |
| (I) | 2430.0 mm | (T) | 4430.0 mm |
| (J) | 340.0 mm | (U) | 1700.0 mm |
| (L) | 2510.0 mm | (V) | 3968.0 mm |
| (M) | 2950.0 mm | | |

Options