

**Performance**

Lifting height — on stabilisers	24100.0 mm
Lifting height — on tyres	20800.0 mm
Rated capacity	4000 kg
Capacity (at max. height on stabilisers)	1800 kg
Capacity (at max. height on tyres)	1800 kg
Capacity (at max. reach on stabilisers)	200 kg
Capacity (at max. reach on tyres)	200 kg
Max. reach on stabilisers	20500.0 mm
Max. reach on tyres	13500.0 mm

**Weights**

Weight (unladen)	17540 kg
------------------	----------

**Traction**

Standard tyres	18 x 22.5 in, Heavy duty
1st gear / low range	10.0 km/h
2nd gear / high range	40.0 km/h
Gradeability	21.8°

**Drive System**

Transmission	Hydrostatic with variable load sensing pump
Main drive	2-speed gear box

**Engine**

Make / Model	FPT NEF Series
Fuel	Diesel
Cooling	Liquid
Rated power (ISO 14396:2002) at 2200 RPM	141.0 HP
Rated power (ISO 14396:2002) at 2200 RPM	105.0 kW
Maximum torque at 1400 RPM	590.0 Nm
Number of cylinders	4
Displacement	4.50 L

**Hydraulic System**

Pump type	Double gear pump
Pump capacity	135.00 L/min
Relief valve pressure setting	230.00 bar

**Cycle Times**

Telescope in time at max. reach - no load	23.1 s
Telescope out time at max. reach - no load	44.4 s

**Brakes**

Engine braking	Hydrostatic
Parking and emergency brake	Negative brake with electro-hydraulic command on rear axle

**Fluid Capacities**

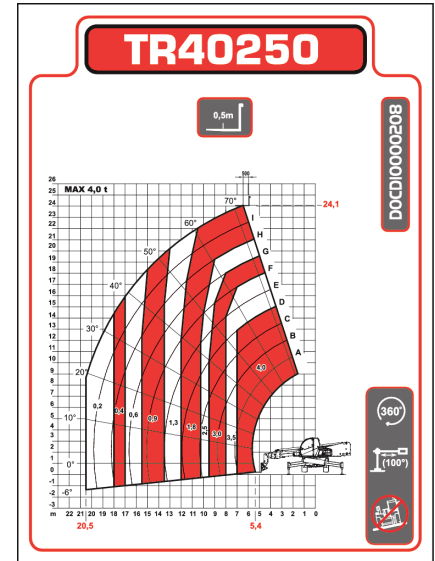
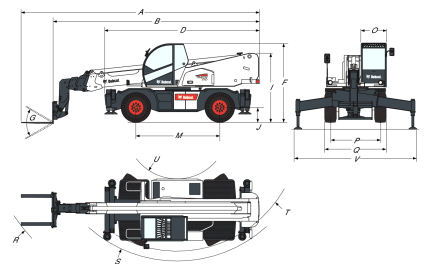
Engine oil	14.40 L
Fuel tank	180.00 L
Hydraulic reservoir	270.00 L

**Environmental**

Operator noise level (LpA) (EN 12053)	77 dB(A)
Level of acoustic power (LWA)	107 dB(A)
Whole body vibration (EN 13059)	1.10 ms <sup>-2</sup>
Whole body vibration uncertainty (EN 13059)	0.14 ms <sup>-2</sup>
Hand-arm vibration (ISO 5349-1)	1.67 ms <sup>-2</sup>

**Load Charts**

On stabilisers, with forks, 90°


**Dimensions**


(A)	9200.0 mm	(O)	980.0 mm
(B)	8000.0 mm	(P)	1920.0 mm
(D)	5290.0 mm	(Q)	2380.0 mm
(F)	3025.0 mm	(R)	7375.0 mm
(G)	115.0°	(S)	4790.0 mm
(I)	2556.0 mm	(T)	4430.0 mm
(J)	360.0 mm	(U)	1700.0 mm
(M)	2950.0 mm	(V)	5070.0 mm